

CRAFTING  
EXCELLENCE

**60X60CM**

PUNCH  
PORCELAIN  
TILES

[WWW.YOURCERAMICA.COM](http://WWW.YOURCERAMICA.COM)





CRAFTING  
EXCELLENCE



## SHAPING BEAUTY, PERFECTING SPACES

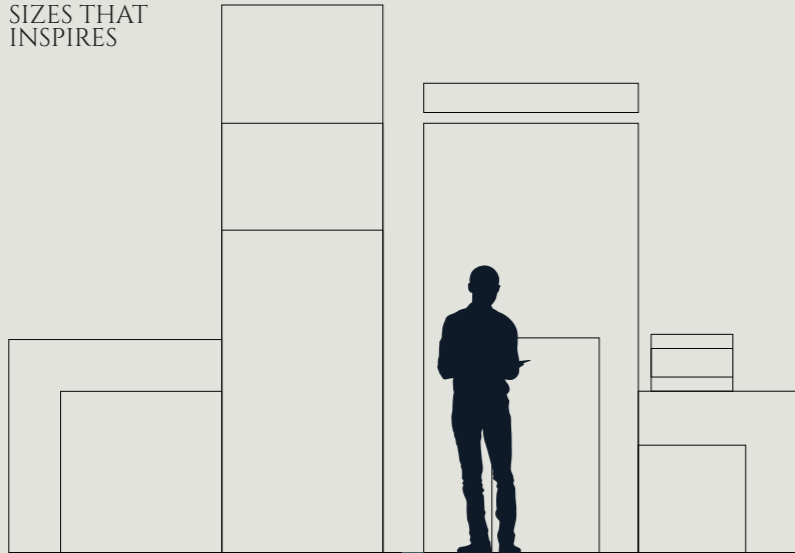
OUR MISSION IS TO SHAPE THE BEAUTY OF NATURE INTO TILES THAT ENHANCE THE AESTHETIC OF EVERY ROOM. WITH A FOCUS ON PRECISION, SUSTAINABILITY, AND LASTING QUALITY, WE STRIVE TO CREATE TILES THAT ARE NOT JUST FUNCTIONAL, BUT WORKS OF ART THAT LEAVE A LASTING IMPRESSION.

AT YOUR CERAMICA, WE ARE DEDICATED TO REDEFINING HOW SPACES ARE DESIGNED, ENSURING EACH TILE WE CRAFT BECOMES A PIECE OF ART THAT STANDS THE TEST OF TIME.

AT YOUR CERAMICA, WE BELIEVE THAT EVERY TILE WE CREATE IS MORE THAN JUST A PRODUCT - IT'S A MASTERPIECE. WITH A COMMITMENT TO QUALITY AND INNOVATION, WE DRAW INSPIRATION FROM THE BEAUTY AND DIVERSITY OF THE NATURAL WORLD. OUR TILES ECHO THE TEXTURES, COLORS, AND PATTERNS OF NATURE, BLENDING ARTISTRY WITH ADVANCED TECHNOLOGY.



SIZES THAT  
INSPIRES

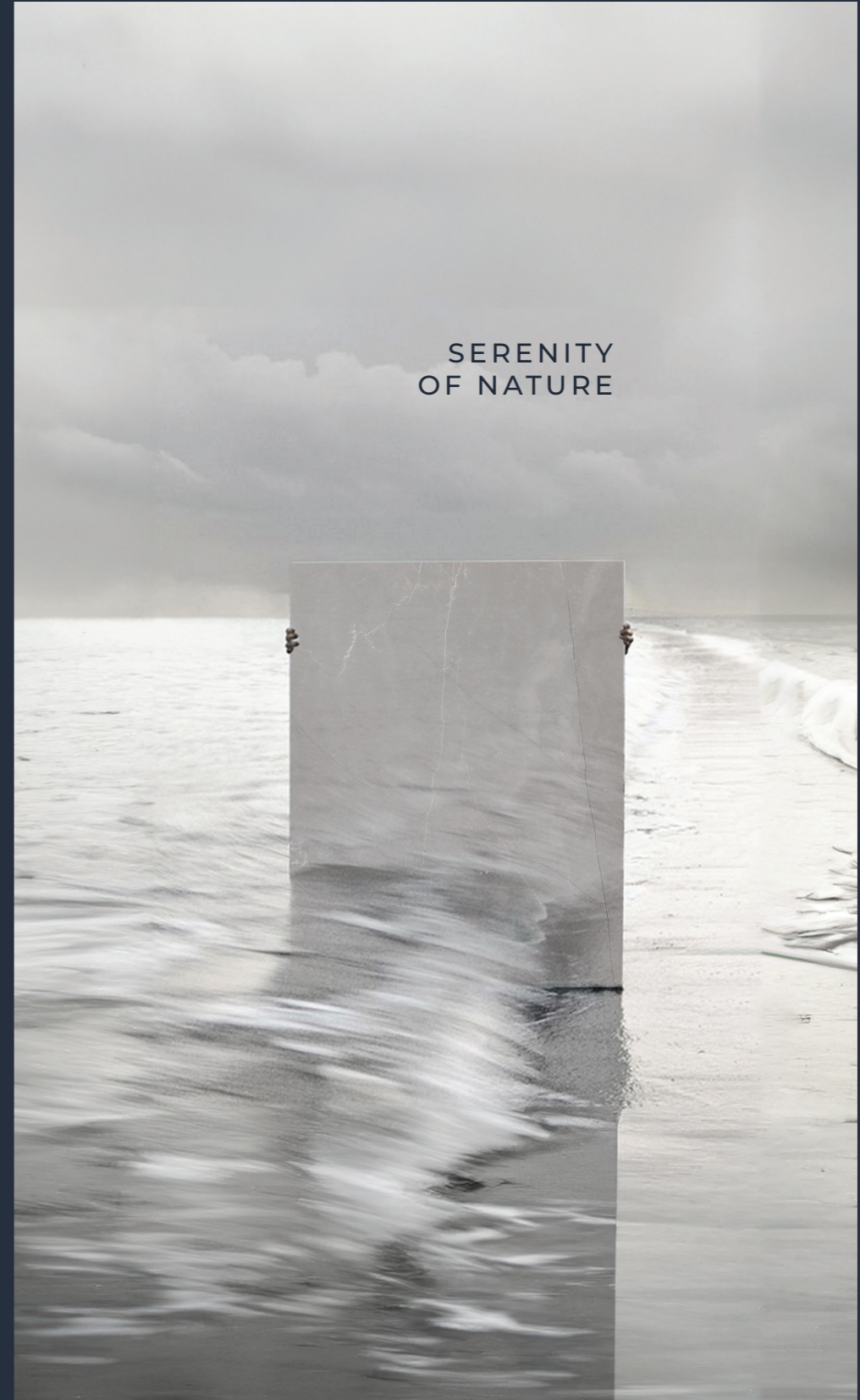


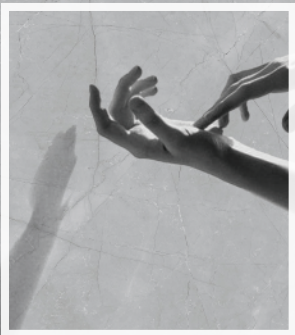
NATURE'S SERENE LANDSCAPES SERVE AS OUR MUSE. FROM THE CALMING HUES OF TRANQUIL WATERS TO THE GENTLE TEXTURES OF WEATHERED STONE, OUR DESIGNS ARE INSPIRED BY THE WORLD'S MOST PEACEFUL AND CAPTIVATING ENVIRONMENTS. EACH TILE CAPTURES THE ESSENCE OF NATURE'S CALM AND INTEGRATES IT SEAMLESSLY INTO YOUR LIVING SPACES.

OUR TILES ARE CRAFTED WITH PRECISION, REFLECTING THE SUBTLE ELEGANCE AND ENDURING STRENGTH FOUND IN NATURE. BY COMBINING THESE NATURAL ELEMENTS WITH INNOVATIVE TECHNOLOGY AND ECO-FRIENDLY PRACTICES, WE ENSURE THAT EVERY TILE FROM YOUR CERAMICA ENHANCES THE SERENITY OF YOUR SURROUNDINGS WHILE OFFERING SUPERIOR DURABILITY AND PERFORMANCE.

[WWW.YOURCERAMICA.COM](http://WWW.YOURCERAMICA.COM)

SERENITY  
OF NATURE





Resistant to  
High Temperature

Easy to  
Clean

100%  
Waterproof

Strong  
Body

Chemical  
Resistance

Frost  
Resistance



## UNMATCHED QUALITY & PERFORMANCE

AT YOUR CERAMICA, WE CREATE STYLISH AND PRACTICAL TILES THAT ARE EASY TO MAINTAIN AND 100% WATERPROOF. OUR TILES OFFER SUPERIOR CHEMICAL RESISTANCE, ARE SCRATCH AND WEAR RESISTANT, AND MADE WITH ECO-FRIENDLY MATERIALS. THEY ARE PERFECT FOR ANY SPACE, PROVIDING A BLEND OF STUNNING DESIGN AND EXCEPTIONAL FUNCTIONALITY.



## ELEVATE EVERY SPACE

IMAGINE A KITCHEN THAT BLENDS ELEGANCE WITH PRACTICALITY, OR A BATHROOM THAT EXUDES TRANQUILITY AND MODERNITY. OUR DIVERSE RANGE OF TILES IS DESIGNED TO ENHANCE EVERY ROOM, TURNING ORDINARY SPACES INTO EXTRAORDINARY EXPERIENCES.



Office



Library



Luxury  
Villas



Shopping  
Mall



Airport



Cozy  
House



Gym



Hospital

## CRAFTING EXCELLENCE



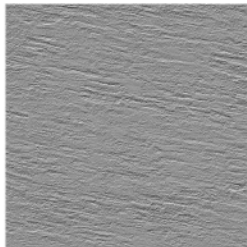
**Punch FINISH**



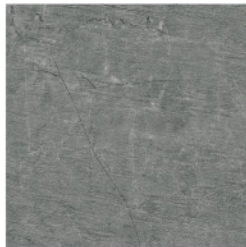
**12MM<sup>+</sup>  
THICKNESS**

**600 x 600 mm**

**HEAVY DUTY**  
VITRIFIED PARKING TILES



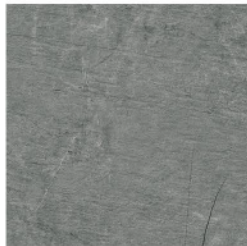
**Punch**



**Deserto Bliss**



**Deserto Frost**





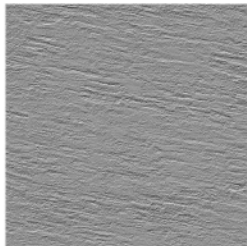
**Punch** FINISH



12MM<sup>+</sup>  
THICKNESS

**600 x 600 mm**

**HEAVY DUTY**  
VITRIFIED PARKING TILES



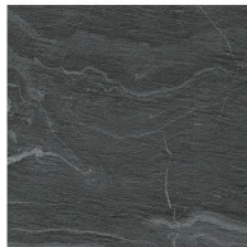
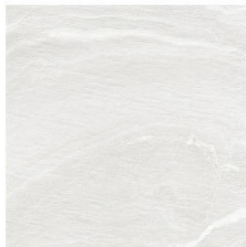
**Punch**



**Deserto Coal**



**Deserto Bianco**





reception  
solarium



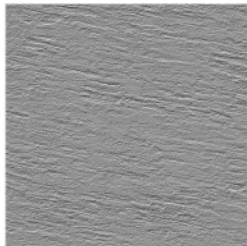
**Punch** FINISH



12MM<sup>+</sup>  
THICKNESS

**600 x 600 mm**

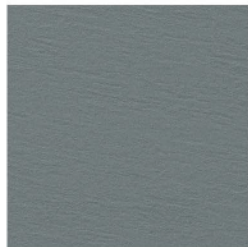
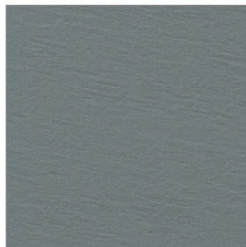
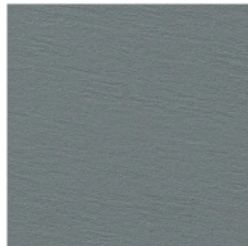
**HEAVY DUTY**  
VITRIFIED PARKING TILES



**Punch**



**Deserto Grey**





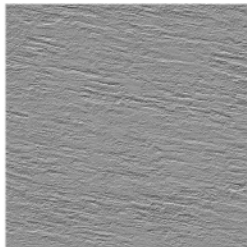
**Punch** FINISH



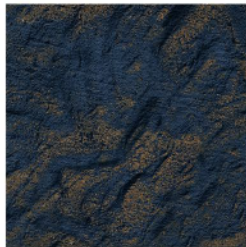
12MM<sup>+</sup>  
THICKNESS

**600 x 600 mm**

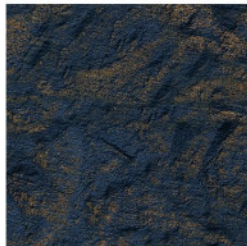
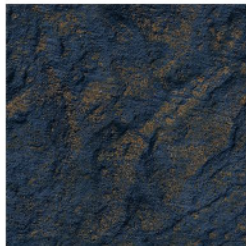
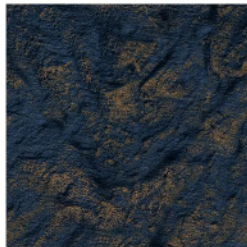
**HEAVY DUTY**  
VITRIFIED PARKING TILES



**Punch**



**Deserto Metallic**





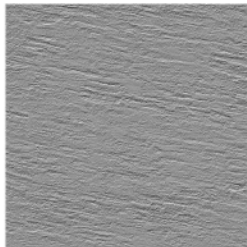
**Punch FINISH**



**12MM<sup>+</sup>  
THICKNESS**

**600 x 600 mm**

**HEAVY DUTY**  
VITRIFIED PARKING TILES



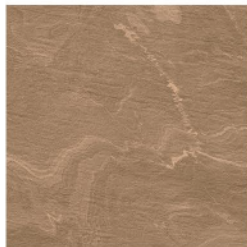
**Punch**



**Deserto Ocra**



**Deserto Crema**





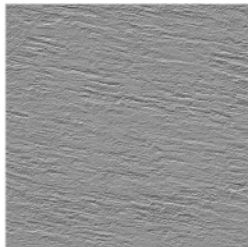
**Punch FINISH**



**12MM<sup>+</sup>  
THICKNESS**

**600 x 600 mm**

**HEAVY DUTY**  
VITRIFIED PARKING TILES



**Punch**



**Deserto Terra**



**Deserto Sandy**





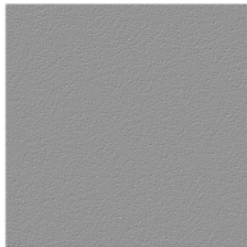
**Punch** FINISH



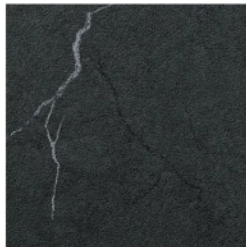
12MM<sup>+</sup>  
THICKNESS

**600 x 600 mm**

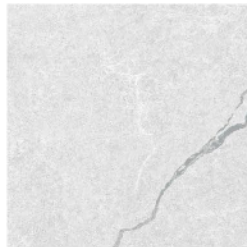
**HEAVY DUTY**  
VITRIFIED PARKING TILES



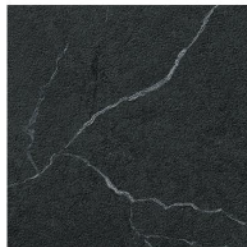
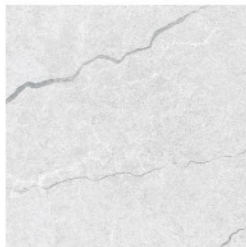
**Punch**



**Grano Black**



**Grano White**





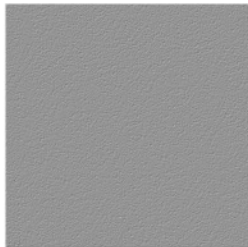
**Punch FINISH**



**12MM<sup>+</sup>  
THICKNESS**

**600 x 600 mm**

**HEAVY DUTY**  
VITRIFIED PARKING TILES



**Punch**



**Grano Brown**



**Grano Crema**





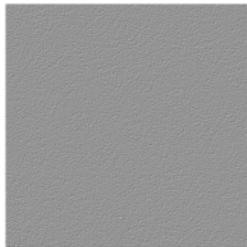
**Punch** FINISH



12MM<sup>+</sup>  
THICKNESS

600 x 600 mm

**HEAVY DUTY**  
VITRIFIED PARKING TILES



**Punch**



**Grano Copper**





HOTEL  
&  
FOOD

RESTAURANT  
LOUNGE  
DEHOR

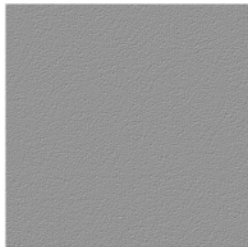
**Punch FINISH**



**12MM<sup>+</sup>  
THICKNESS**

**600 x 600 mm**

**HEAVY DUTY**  
VITRIFIED PARKING TILES



**Punch**



**Grano Forest**



**Grano Avorio**





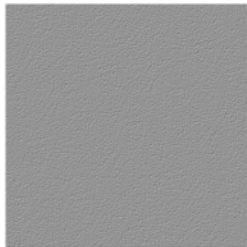
**Punch** FINISH



12MM<sup>+</sup>  
THICKNESS

600 x 600 mm

**HEAVY DUTY**  
VITRIFIED PARKING TILES



**Punch**



**Grano Grey**



**Grano Verde**







**Your Ceramica**

[contact@yourceramica.com](mailto:contact@yourceramica.com)

[www.yourceramica.com](http://www.yourceramica.com)

+919979604896