

CRAFTING  
EXCELLENCE

**60X120CM**

MATT/POLISHED  
PORCELAIN  
TILES

WWW.YOURCERAMICA.COM







# SHAPING BEAUTY, PERFECTING SPACES

OUR MISSION IS TO SHAPE THE BEAUTY OF NATURE INTO TILES THAT ENHANCE THE AESTHETIC OF EVERY ROOM. WITH A FOCUS ON PRECISION, SUSTAINABILITY, AND LASTING QUALITY, WE STRIVE TO CREATE TILES THAT ARE NOT JUST FUNCTIONAL, BUT WORKS OF ART THAT LEAVE A LASTING IMPRESSION.

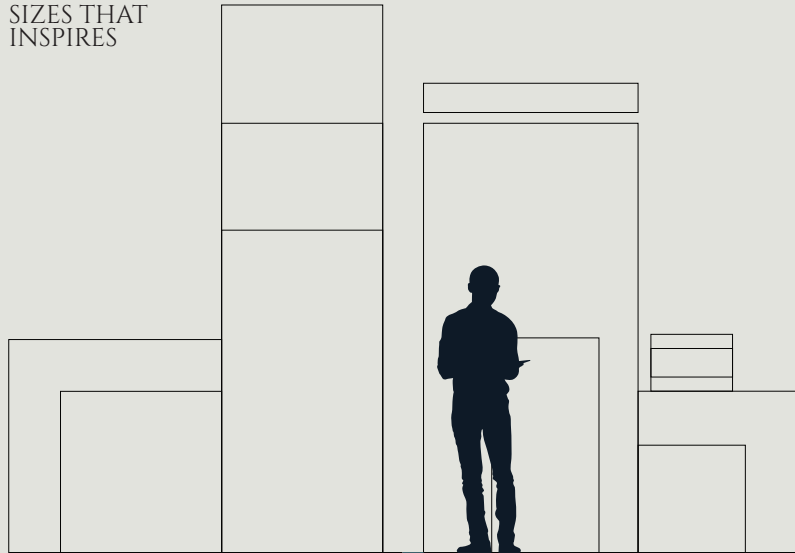
AT YOUR CERAMICA, WE ARE DEDICATED TO REDEFINING HOW SPACES ARE DESIGNED, ENSURING EACH TILE WE CRAFT BECOMES A PIECE OF ART THAT STANDS THE TEST OF TIME.

AT YOUR CERAMICA, WE BELIEVE THAT EVERY TILE WE CREATE IS MORE THAN JUST A PRODUCT – IT'S A MASTERPIECE. WITH A COMMITMENT TO QUALITY AND INNOVATION, WE DRAW INSPIRATION FROM THE BEAUTY AND DIVERSITY OF THE NATURAL WORLD. OUR TILES ECHO THE TEXTURES, COLORS, AND PATTERNS OF NATURE, BLENDING ARTISTRY WITH ADVANCED TECHNOLOGY.





SIZES THAT  
INSPIRES

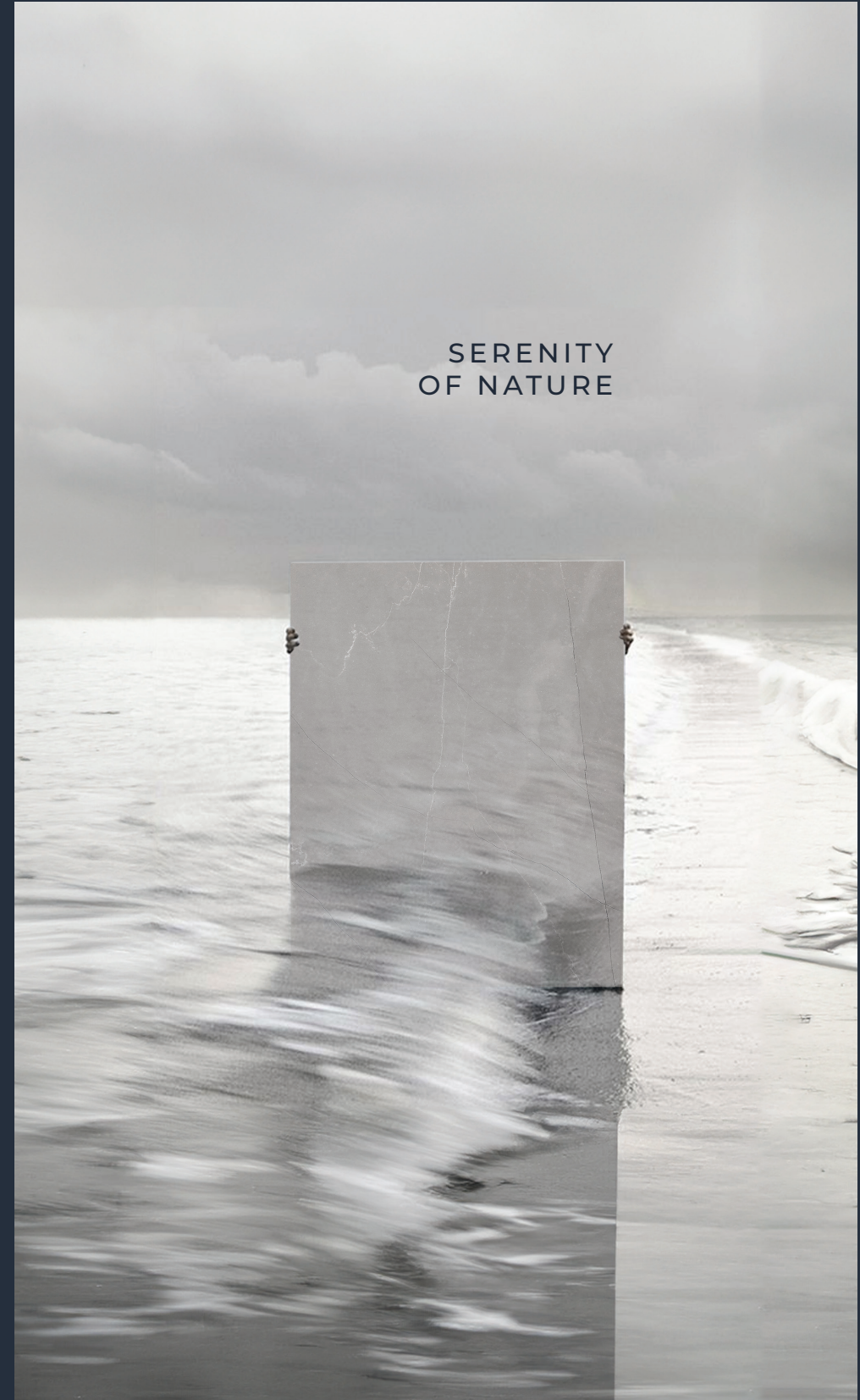


NATURE'S SERENE LANDSCAPES SERVE AS OUR MUSE. FROM THE CALMING HUES OF TRANQUIL WATERS TO THE GENTLE TEXTURES OF WEATHERED STONE, OUR DESIGNS ARE INSPIRED BY THE WORLD'S MOST PEACEFUL AND CAPTIVATING ENVIRONMENTS. EACH TILE CAPTURES THE ESSENCE OF NATURE'S CALM AND INTEGRATES IT SEAMLESSLY INTO YOUR LIVING SPACES.

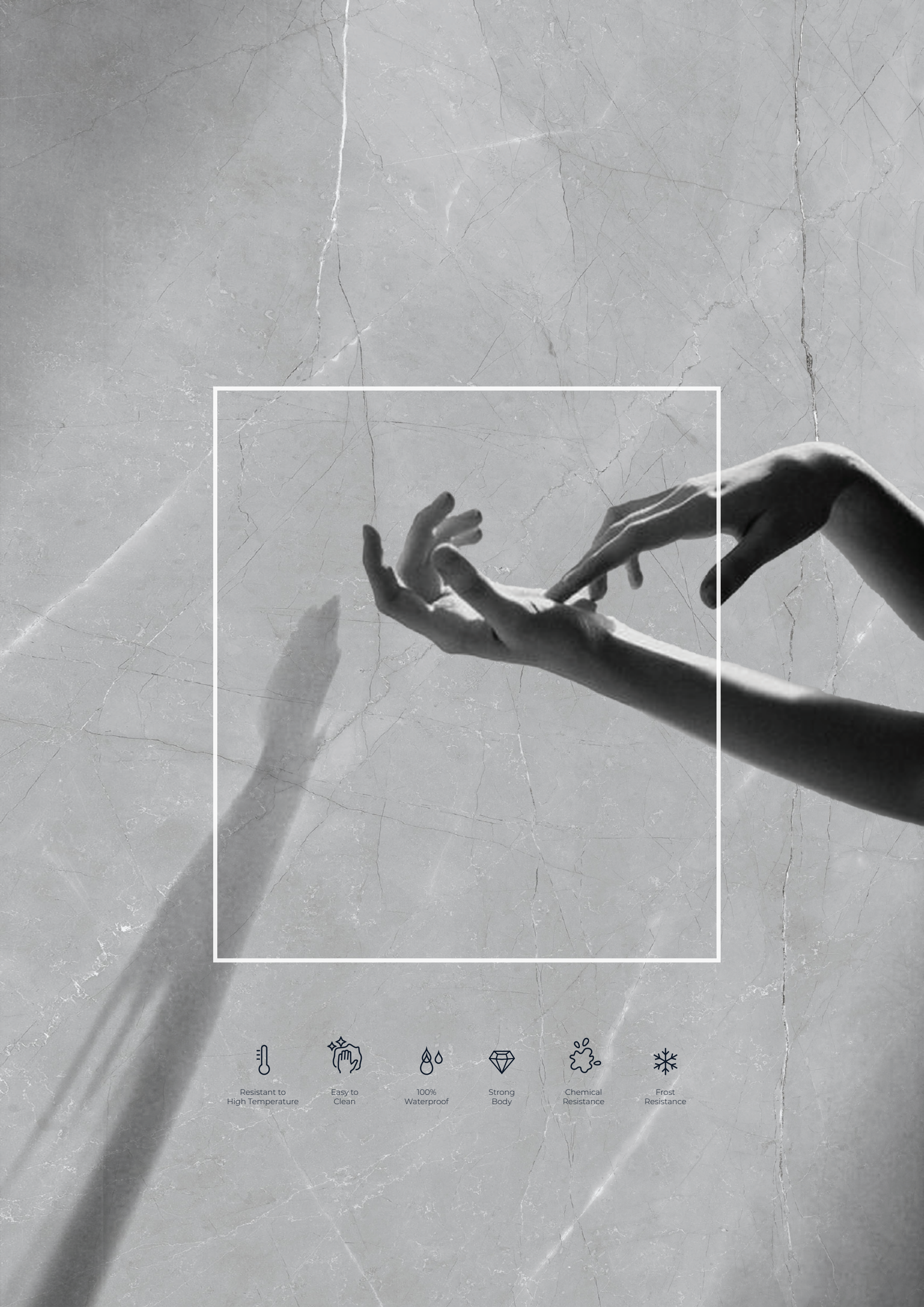
OUR TILES ARE CRAFTED WITH PRECISION, REFLECTING THE SUBTLE ELEGANCE AND ENDURING STRENGTH FOUND IN NATURE. BY COMBINING THESE NATURAL ELEMENTS WITH INNOVATIVE TECHNOLOGY AND ECO-FRIENDLY PRACTICES, WE ENSURE THAT EVERY TILE FROM YOUR CERAMICA ENHANCES THE SERENITY OF YOUR SURROUNDINGS WHILE OFFERING SUPERIOR DURABILITY AND PERFORMANCE.

[WWW.YOURCERAMICA.COM](http://WWW.YOURCERAMICA.COM)

SERENITY  
OF NATURE







Resistant to  
High Temperature



Easy to  
Clean



100%  
Waterproof



Strong  
Body



Chemical  
Resistance



Frost  
Resistance



## UNMATCHED QUALITY & PERFORMANCE

AT YOUR CERAMICA, WE CREATE STYLISH AND PRACTICAL TILES THAT  
ARE EASY TO MAINTAIN AND 100% WATERPROOF. OUR TILES OFFER  
SUPERIOR CHEMICAL RESISTANCE, ARE SCRATCH AND WEAR RESISTANT,  
AND MADE WITH ECO-FRIENDLY MATERIALS. THEY ARE PERFECT FOR  
ANY SPACE, PROVIDING A BLEND OF STUNNING DESIGN AND  
EXCEPTIONAL FUNCTIONALITY.





# ELEVATE EVERY SPACE

IMAGINE A KITCHEN THAT BLENDS ELEGANCE WITH PRACTICALITY, OR A BATHROOM THAT EXUDES TRANQUILITY AND MODERNITY. OUR DIVERSE RANGE OF TILES IS DESIGNED TO ENHANCE EVERY ROOM, TURNING ORDINARY SPACES INTO EXTRAORDINARY EXPERIENCES.



Office



Library



Luxury  
Villas



Shopping  
Mall



Airport



Cozy  
House

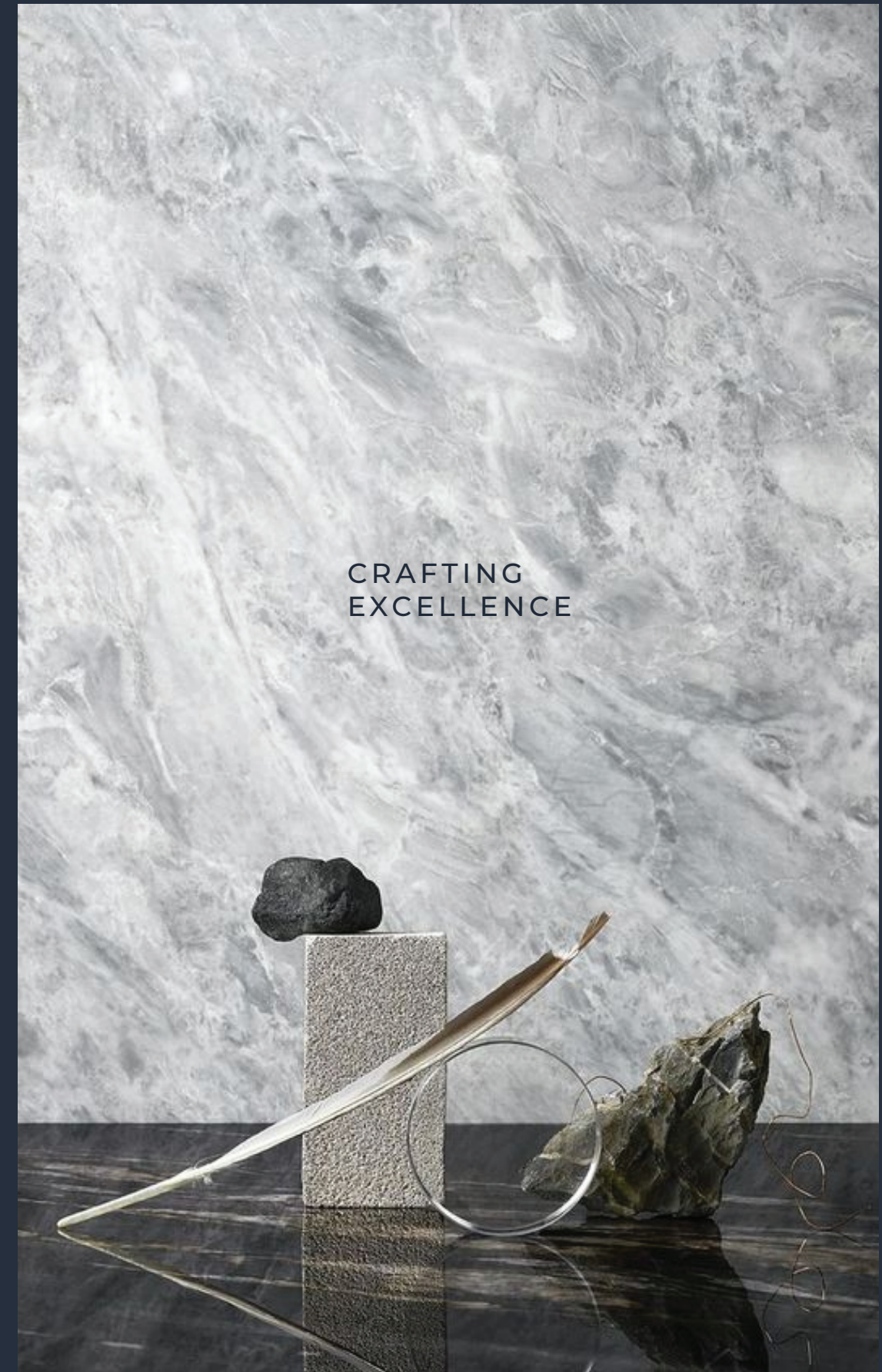


Gym



Hospital

## CRAFTING EXCELLENCE





DOLPHIN

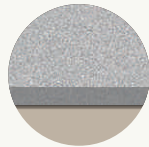


800x1600mm

POLISHED FINISH



MATT FINISH



THICKNESS 9MM



CHEMICAL  
RESISTANCE



MAINTENANCE  
FREE



HIGH  
STRENGTH

600x1200mm

STONE PUNCH



POLISHED FINISH



LINEA PUNCH



MATT FINISH



STRAPES PUNCH





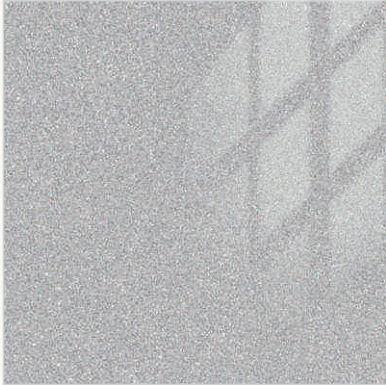
**DOLPHIN**

**FULL BODY**  
VITRIFIED TILES

**LARGEST PAVILION OF  
FULLBODY TILES**

600x600mm

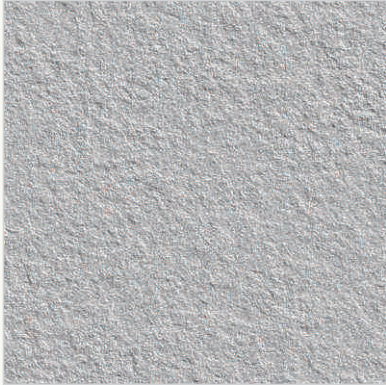
● POLISHED FINISH



● MATT FINISH



● ROCK PUNCH



HIGH  
STRENGTH



MAINTENANCE  
FREE



CHEMICAL  
RESISTANCE



**DOLPHIN**  
[ROCK PUNCH]





DOLOMINE



DOLOMINE  
[POLISHED FINISH]

800x1600mm

POLISHED FINISH



MATT FINISH



THICKNESS 9MM



HIGH  
STRENGTH



MAINTENANCE  
FREE



CHEMICAL  
RESISTANCE

LARGEST PAVILION OF  
FULLBODY TILES

600x1200mm

POLISHED FINISH



MATT FINISH



STONE PUNCH



LINEA PUNCH



STRAPES PUNCH

600x600mm

POLISHED FINISH



MATT FINISH





**BUTTER**



**BUTTER**  
[POLISHED FINISH]

**800x1600mm**

☑ POLISHED FINISH



● MATT FINISH



THICKNESS 9MM



CHEMICAL  
RESISTANCE



MAINTENANCE  
FREE



HIGH  
STRENGTH

**LARGEST PAVILION OF  
FULLBODY TILES**

**600x1200mm | 600X600MM**

☑ POLISHED FINISH



☑ POLISHED FINISH



● MATT FINISH



● MATT FINISH





# NUT BROWN

**FULL BODY**  
VITRIFIED TILES

**LARGEST PAVILION OF  
FULLBODY TILES**

600x600mm

● POLISHED FINISH



● MATT FINISH



● ROCK PUNCH



HIGH  
STRENGTH



MAINTENANCE  
FREE



CHEMICAL  
RESISTANCE



**NUT BROWN**  
[MATT FINISH]





APRICOT



600x1200mm

● POLISHED FINISH



● STONE PUNCH



● MATT FINISH



● LINEA PUNCH



● STRAPES PUNCH



CHEMICAL  
RESISTANCE



MAINTENANCE  
FREE



HIGH  
STRENGTH

LARGEST PAVILION OF  
FULLBODY TILES

600x600mm

● POLISHED FINISH



● MATT FINISH



● ROCK PUNCH





GRAPHITE



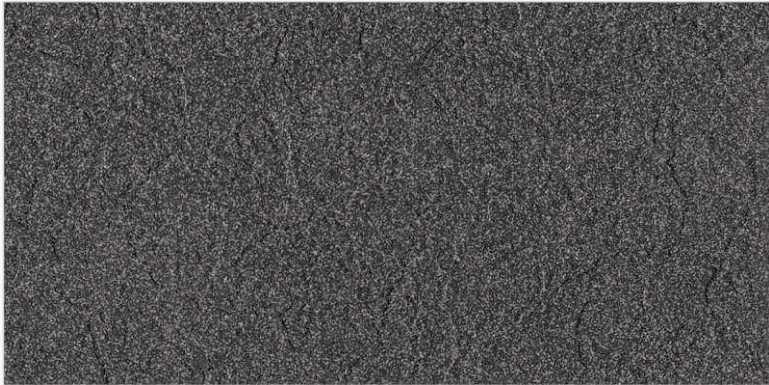
GRAPHITE  
[MATT FINISH]

600x1200mm

POLISHED FINISH



MATT FINISH



STONE PUNCH



LINEA PUNCH



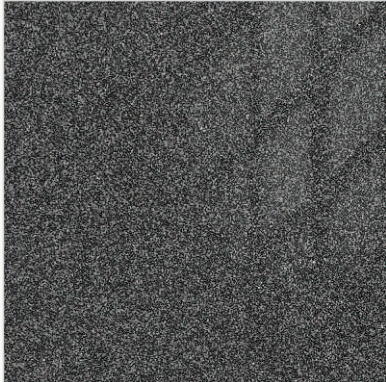
STRAPES PUNCH

- CHEMICAL RESISTANCE
- MAINTENANCE FREE
- HIGH STRENGTH

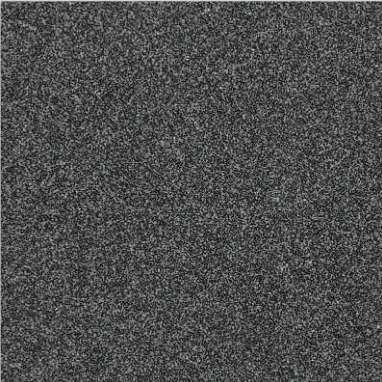
LARGEST PAVILION OF  
FULLBODY TILES

600x600mm

POLISHED FINISH



MATT FINISH



ROCK PUNCH



GRAPHITE  
[POLISHED FINISH]





SMOKE



600x1200mm | 600x600mm

● MATT FINISH



● MATT FINISH



THICKNESS 9MM



CHEMICAL  
RESISTANCE



MAINTENANCE  
FREE



HIGH  
STRENGTH

LARGEST PAVILION OF  
FULLBODY TILES





MUD

600x600mm

● POLISHED FINISH



● MATT FINISH



● ROCK PUNCH



HIGH  
STRENGTH



MAINTENANCE  
FREE



CHEMICAL  
RESISTANCE



MUD  
[POLISHED FINISH]





COOKIE



600x1200mm | 600x600mm

● POLISHED FINISH



● POLISHED FINISH



● MATT FINISH



● MATT FINISH



CHEMICAL  
RESISTANCE



MAINTENANCE  
FREE



HIGH  
STRENGTH



THICKNESS 9MM

LARGEST PAVILION OF  
FULLBODY TILES





**BOURBON**

**FULL BODY**  
VITRIFIED TILES

**LARGEST PAVILION OF  
FULLBODY TILES**

600x1200mm | 600x600mm

● POLISHED FINISH



● MATT FINISH



● POLISHED FINISH



● MATT FINISH



HIGH  
STRENGTH



MAINTENANCE  
FREE



CHEMICAL  
RESISTANCE



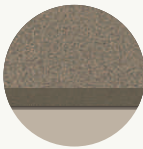
**BOURBON**  
[POLISHED FINISH]



MUSHROOM



MUSHROOM  
[POLISHED FINISH]



THICKNESS 9MM



HIGH  
STRENGTH



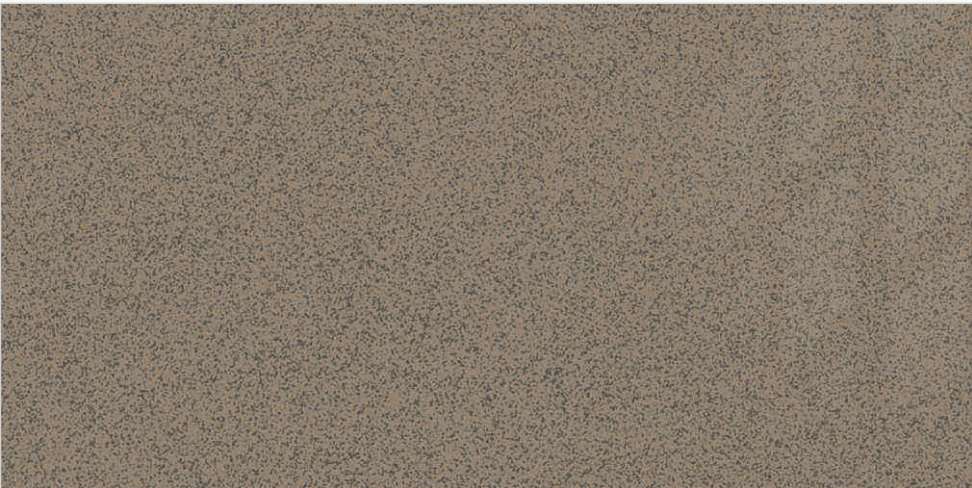
MAINTENANCE  
FREE



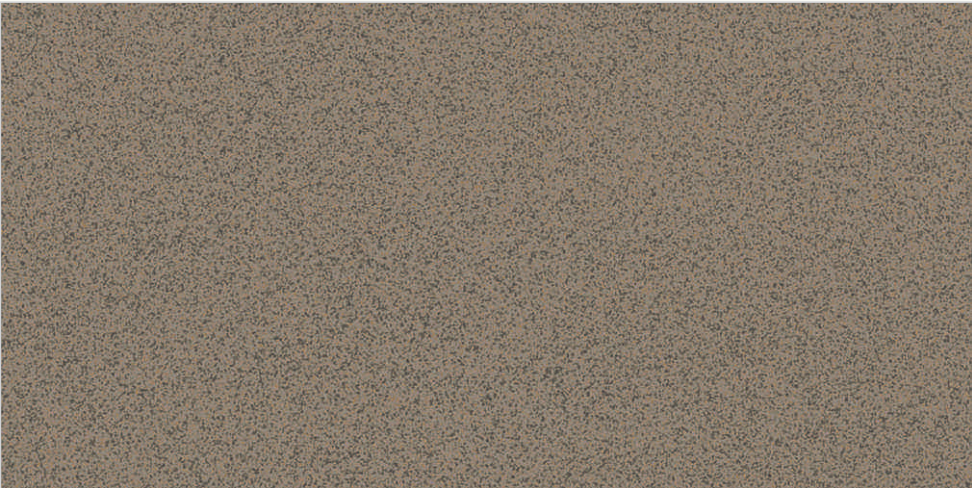
CHEMICAL  
RESISTANCE

800x1600mm | 600x600mm

POLISHED FINISH



POLISHED FINISH



MATT FINISH



MATT FINISH

600x1200mm

POLISHED FINISH



MATT FINISH



STONE PUNCH



LINEA PUNCH



STRAPES PUNCH



MUSHROOM  
[STONE PUNCH]



# TERRAIN

600x1200mm

● POLISHED FINISH



● MATT FINISH



● POLISHED FINISH



THICKNESS 9MM



HIGH  
STRENGTH



MAINTENANCE  
FREE



CHEMICAL  
RESISTANCE

● MATT FINISH



**FULL BODY**  
VITRIFIED TILES

LARGEST PAVILION OF  
FULLBODY TILES



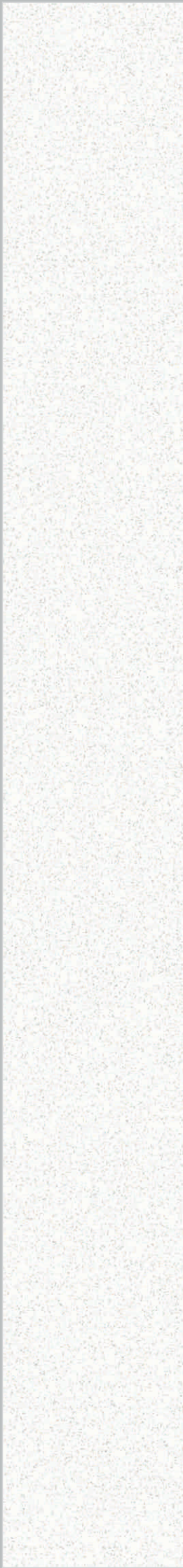
TERRAIN  
[MATT FINISH]



ALPINE WHITE



LARGEST PAVILION OF  
FULLBODY TILES

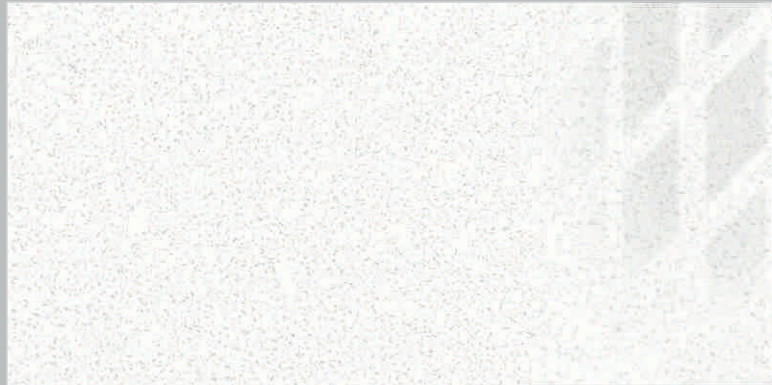


800x1600mm | 600x1200mm

● POLISHED FINISH



● POLISHED FINISH



THICKNESS 9MM



HIGH  
STRENGTH



MAINTENANCE  
FREE



CHEMICAL  
RESISTANCE



ALPINE WHITE  
[POLISHED FINISH]



FOREST



800x1600mm

POLISHED FINISH



MATT FINISH



THICKNESS 9MM



HIGH  
STRENGTH



MAINTENANCE  
FREE



CHEMICAL  
RESISTANCE

LARGEST PAVILION OF  
FULLBODY TILES

600x1200mm

POLISHED FINISH



MATT FINISH

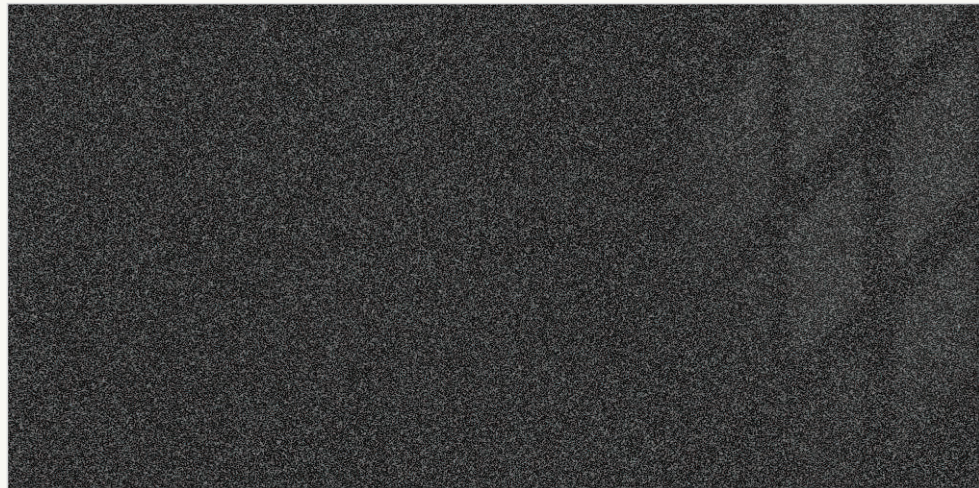




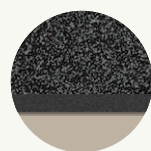
GALAXY

800x1600mm

● POLISHED FINISH



● MATT FINISH



THICKNESS 9MM



HIGH  
STRENGTH



MAINTENANCE  
FREE



CHEMICAL  
RESISTANCE

**FULL** BODY  
VITRIFIED TILES

LARGEST PAVILION OF  
FULLBODY TILES



GALAXY  
[MATT FINISH]



STEEL GREY

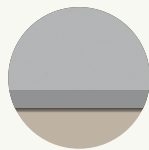


800x1600mm

POLISHED FINISH



MATT FINISH



THICKNESS 9MM



CHEMICAL  
RESISTANCE



MAINTENANCE  
FREE



HIGH  
STRENGTH

LARGEST PAVILION OF  
FULLBODY TILES

600x1200mm | 600X600MM

POLISHED FINISH



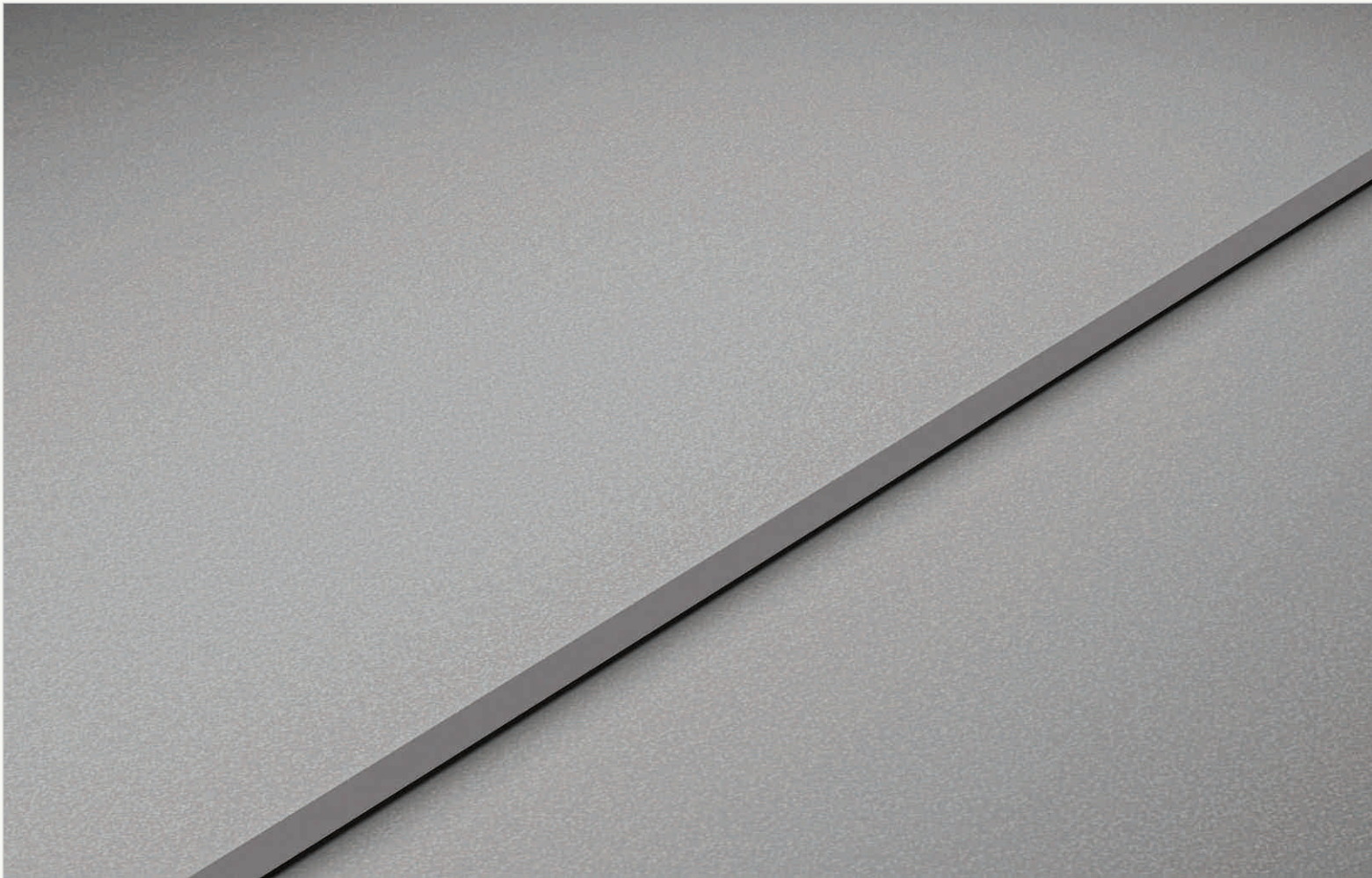
POLISHED FINISH



MATT FINISH



MATT FINISH





**SLATE GREY**



SLATE GREY  
[MATT FINISH]

**LARGEST PAVILION OF  
FULLBODY TILES**

600x1200mm

● MATT FINISH



● STONE PUNCH



● LINEA PUNCH



● STRAPES PUNCH

800x1600mm

● MATT FINISH



- CHEMICAL RESISTANCE
- MAINTENANCE FREE
- HIGH STRENGTH

600x600mm

● MATT FINISH

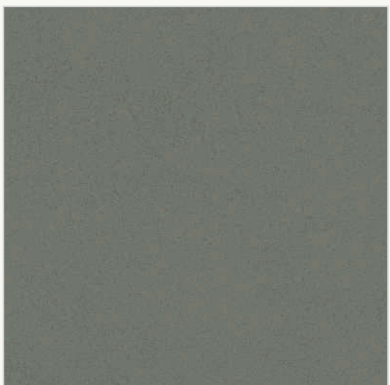


● ROCK PUNCH

**COTTA**

600x1200mm | 600x600mm

● MATT FINISH



● MATT FINISH





CHARCOAL BLACK



800x1600mm

● POLISHED FINISH



● MATT FINISH



THICKNESS 9MM



HIGH  
STRENGTH



MAINTENANCE  
FREE



CHEMICAL  
RESISTANCE

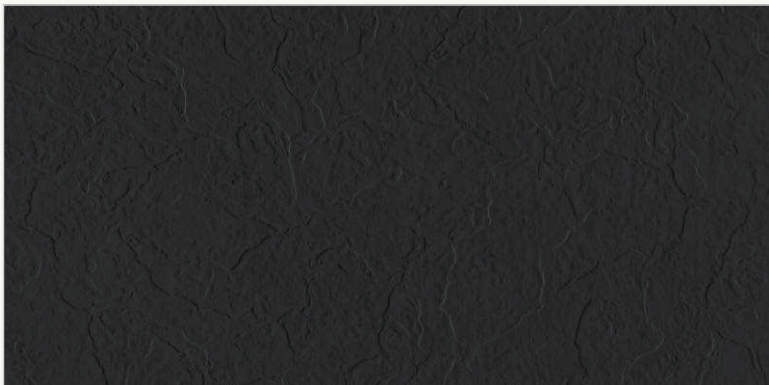
LARGEST PAVILION OF  
FULLBODY TILES

600x1200mm

● POLISHED FINISH

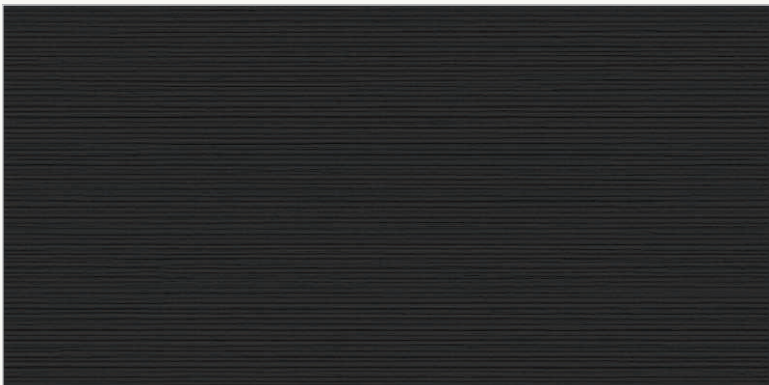


● MATT FINISH



● STONE PUNCH

● LINEA PUNCH



● STRAPES PUNCH

600x600mm

● MATT FINISH



● ROCK PUNCH





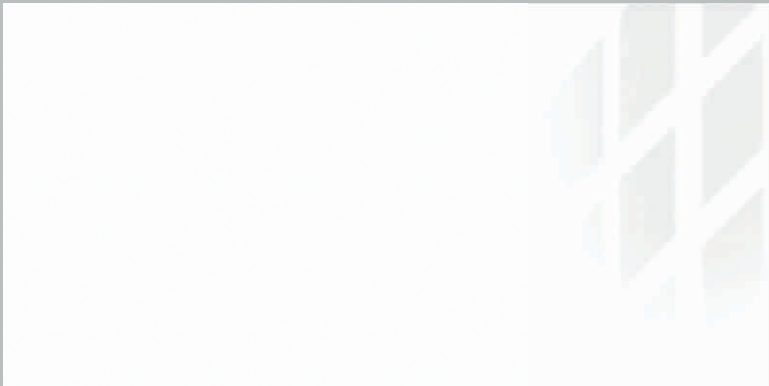
SNOW WHITE



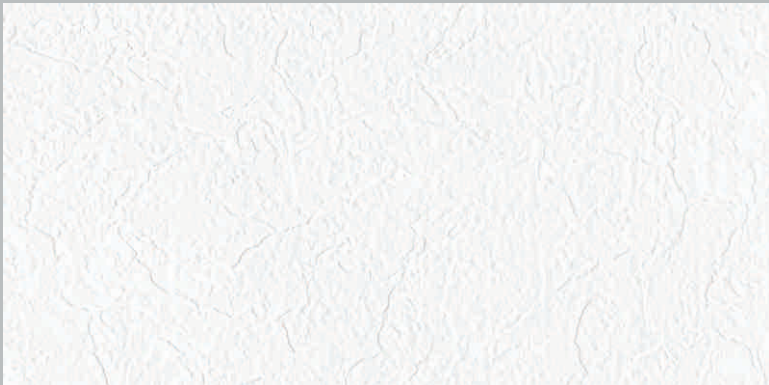
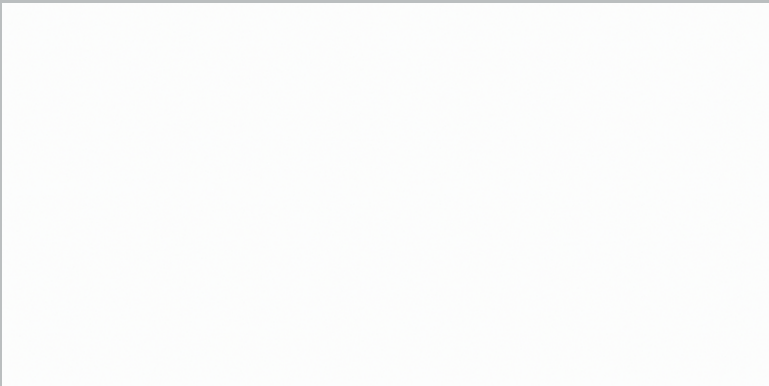
SNOW WHITE  
[POLISHED FINISH]

600x1200mm

☐ POLISHED FINISH



☒ MATT FINISH



☒ STONE PUNCH



☒ LINEA PUNCH



☒ STRAPES PUNCH

- CHEMICAL RESISTANCE
- MAINTENANCE FREE
- HIGH STRENGTH

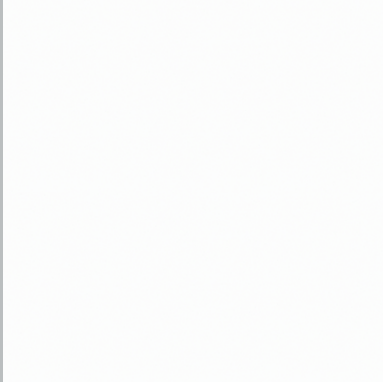
LARGEST PAVILION OF  
FULLBODY TILES

600x600mm

☐ POLISHED FINISH



☒ MATT FINISH



SNOW WHITE  
[POLISHED FINISH]



OLIVE



600x1200mm

POLISHED FINISH



MATT FINISH



STONE PUNCH



LINEA PUNCH



CHEMICAL  
RESISTANCE



MAINTENANCE  
FREE



HIGH  
STRENGTH



STRAPES PUNCH

LARGEST PAVILION OF  
FULLBODY TILES

600x600mm

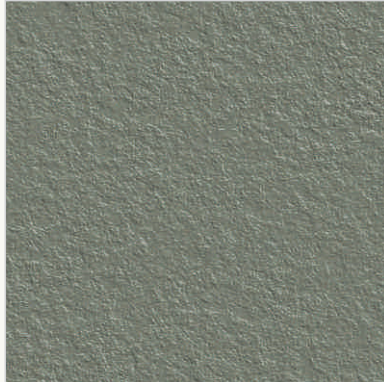
POLISHED FINISH



MATT FINISH



ROCK PUNCH





**PURE BLACK**

600x600mm

● POLISHED FINISH



**PURE BLACK**  
[POLISHED FINISH]

**JAISALMER**

600x1200mm | 600x600mm

● POLISHED FINISH



● POLISHED FINISH



● MATT FINISH

● MATT FINISH



**JAISALMER**  
[POLISHED FINISH]





COTTON

● POLISHED FINISH



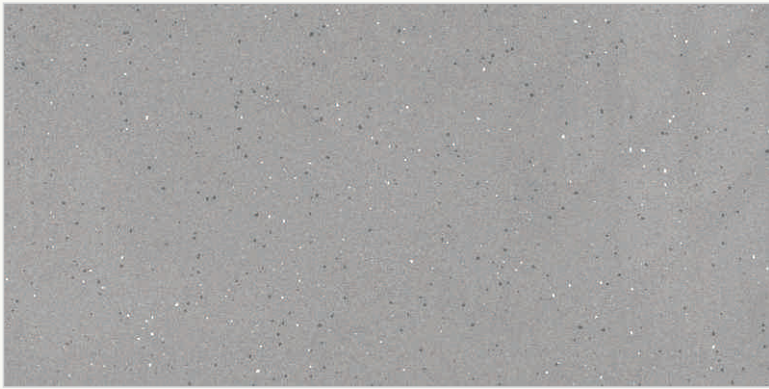
COTTON

● MATT FINISH



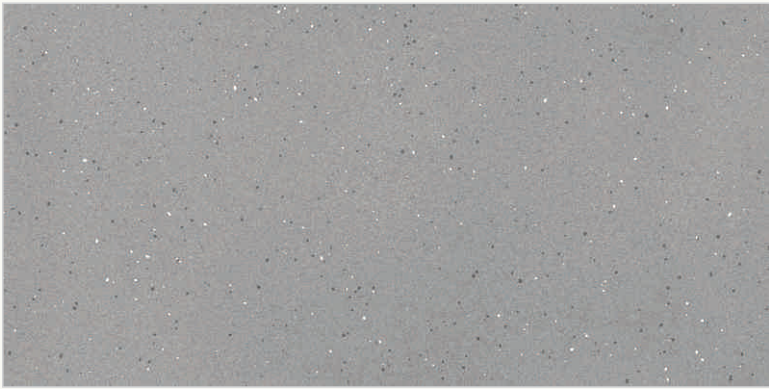
COTTON  
[MATT FINISH]

LARGEST PAVILION OF  
FULLBODY TILES



CADET

● POLISHED FINISH



CADET

● MATT FINISH



CADET  
[GLOSSY FINISH]



600x1200mm



SILVER

● POLISHED FINISH



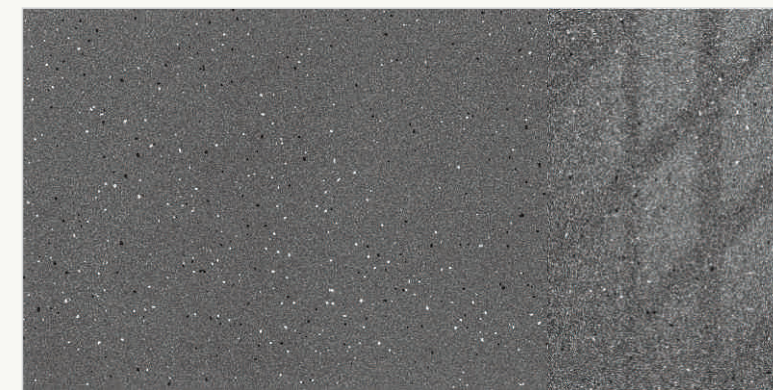
SILVER

● MATT FINISH



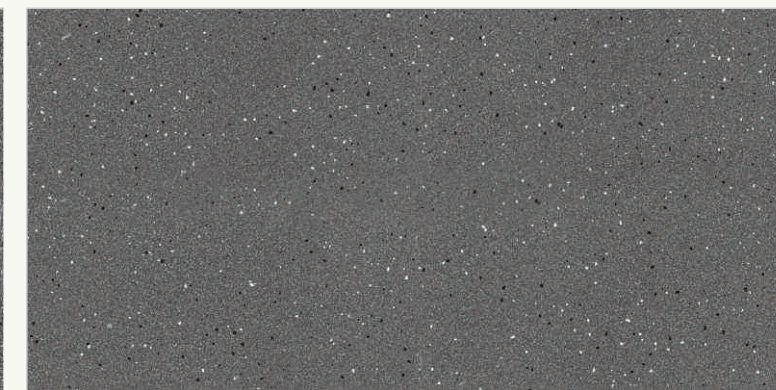
**SILVER & LEAD**  
[GLOSSY FINISH]

**LARGEST PAVILION OF  
FULLBODY TILES**



LEAD

● POLISHED FINISH



LEAD

● MATT FINISH



**LEAD**  
[MATT FINISH]



600x1200mm



VANILLA

● POLISHED FINISH



VANILLA

● MATT FINISH



VANILLA  
[MATT FINISH]

**LARGEST PAVILION OF  
FULLBODY TILES**



HAZEL

● POLISHED FINISH



HAZEL

● MATT FINISH



HAZEL  
[GLOSSY FINISH]



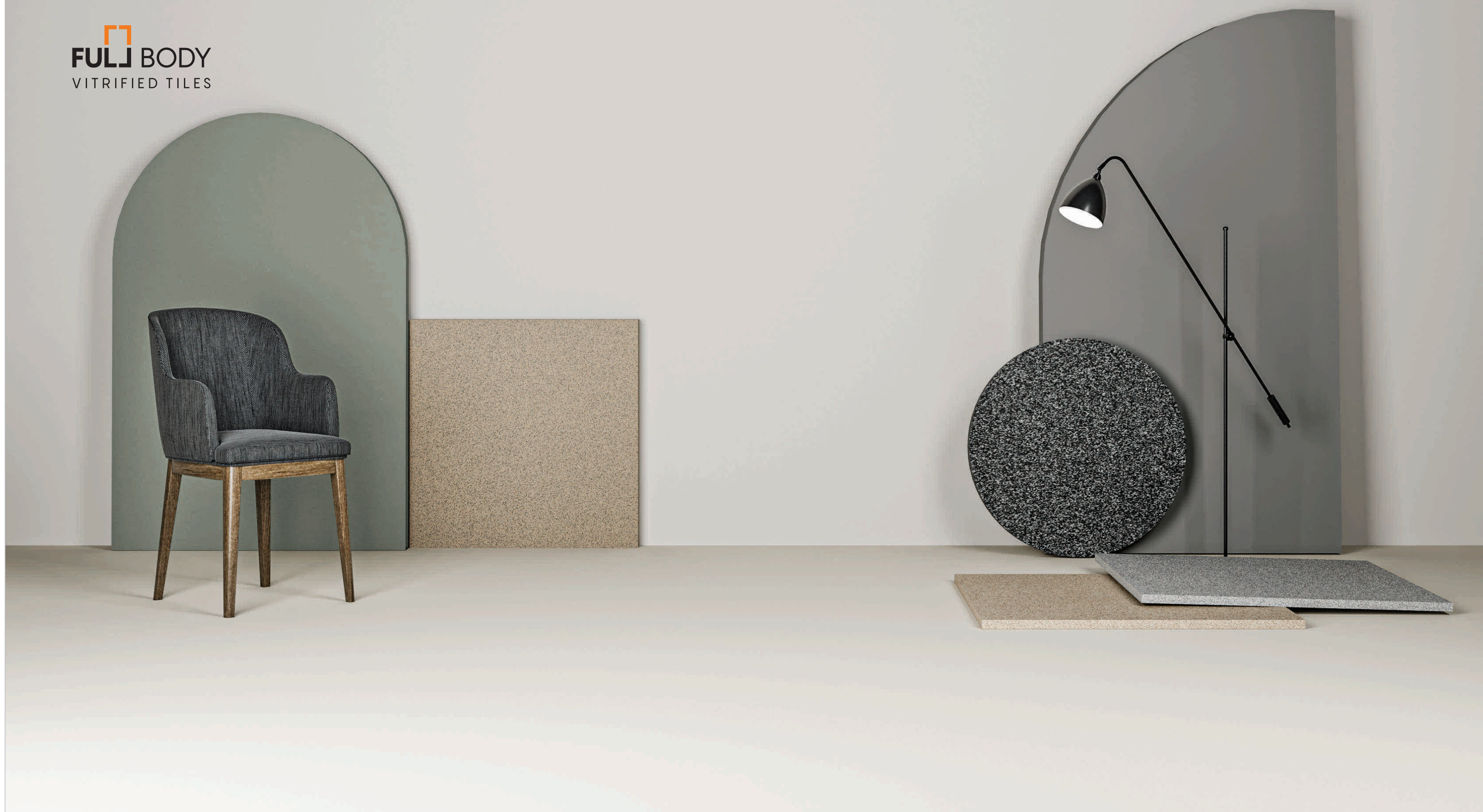
→ ←  
15MM

600X600MM

INTRODUCING THE DAWN OF  
ERA FOR EXCEPTIONAL SURFACE.

Meticulously designed tiles enchant with  
sumptuous detailing and stunning color palettes.

**FULL** BODY  
VITRIFIED TILES





COOKIE

FULL BODY  
VITRIFIED TILES

LARGEST PAVILION OF  
FULLBODY TILES

600x600mm

● MATT FINISH



HIGH  
STRENGTH



MAINTENANCE  
FREE



CHEMICAL  
RESISTANCE





**DOLPHIN**

600x600mm

● MATT FINISH



HIGH  
STRENGTH



MAINTENANCE  
FREE



CHEMICAL  
RESISTANCE

**FULL BODY**  
VITRIFIED TILES

**LARGEST PAVILION OF  
FULLBODY TILES**



**DOLPHIN**  
[MATT FINISH]





**GRAPHITE**

600x600mm

● MATT FINISH



HIGH  
STRENGTH



MAINTENANCE  
FREE



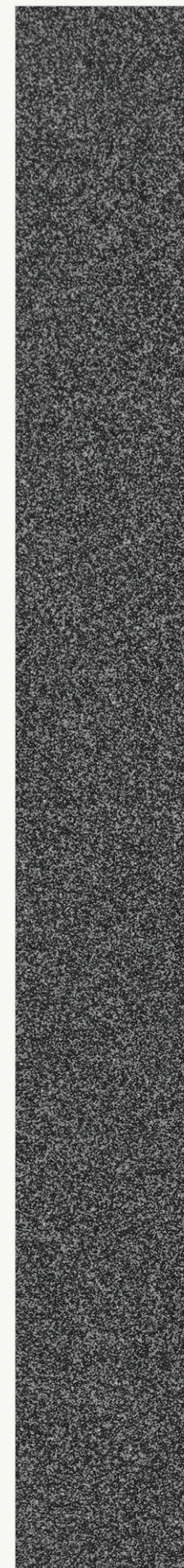
CHEMICAL  
RESISTANCE

**FULL BODY**  
VITRIFIED TILES

**LARGEST PAVILION OF  
FULLBODY TILES**



**GRAPHITE**  
[MATT FINISH]





# MUSHROOM

600x600mm

● MATT FINISH



HIGH  
STRENGTH



MAINTENANCE  
FREE



CHEMICAL  
RESISTANCE

**FULL BODY**  
VITRIFIED TILES

LARGEST PAVILION OF  
FULLBODY TILES



**MUSHROOM**  
[MATT FINISH]



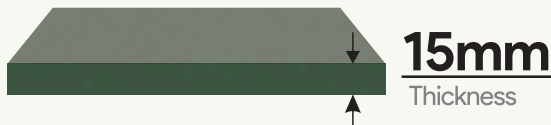
**OLIVE**

**FULL BODY**  
VITRIFIED TILES

**LARGEST PAVILION OF  
FULLBODY TILES**

600x600mm

● MATT FINISH



**15mm**  
Thickness



HIGH  
STRENGTH



MAINTENANCE  
FREE



CHEMICAL  
RESISTANCE



**OLIVE**  
[MATT FINISH]



**SLATE GREY**

**FULL BODY**  
VITRIFIED TILES

**LARGEST PAVILION OF  
FULLBODY TILES**

600x600mm

● MATT FINISH



HIGH  
STRENGTH



MAINTENANCE  
FREE



CHEMICAL  
RESISTANCE



**SLATE GREY**  
[MATT FINISH]



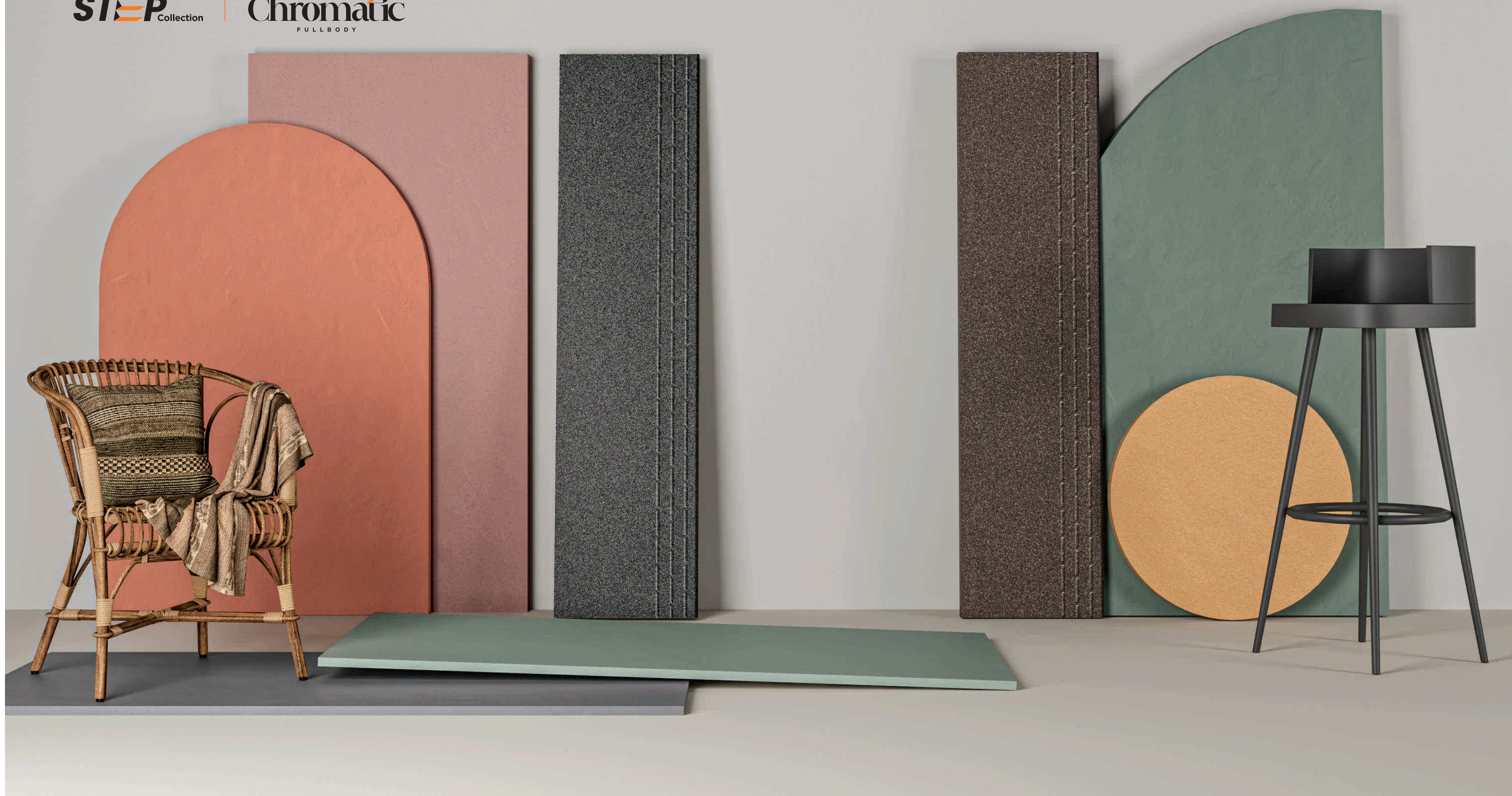
→ ←  
9MM

300X1200MM | 600X1200MM

UNVEILING THE NEW EPOCH  
FOR EXTRAORDINARY PRODUCT

Exquisitely crafted tiles have intricate designs and  
captivating color combinations.

**STEP** Collection | **Chromatic**  
FULLBODY





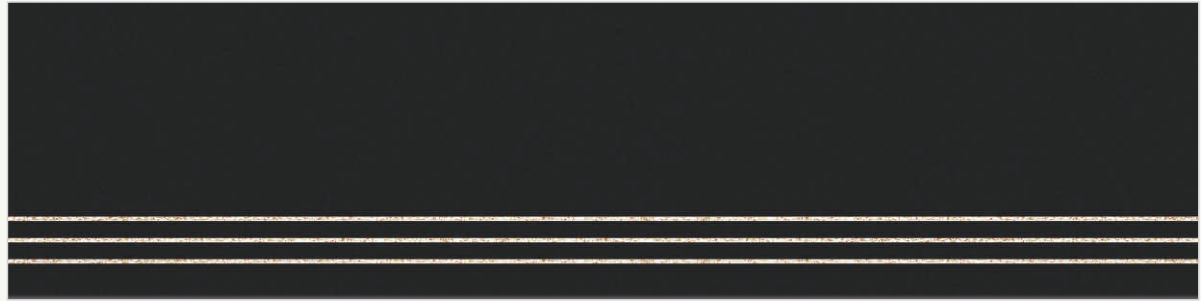
300x1200mm



LARGEST PAVILION OF  
FULLBODY TILES



APRICOT ● MATT FINISH



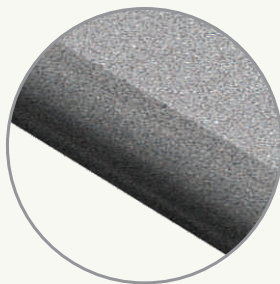
CHARCOAL BLACK ● MATT FINISH



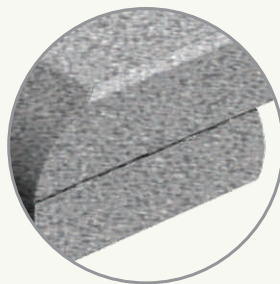
DOLOMINE ● MATT FINISH



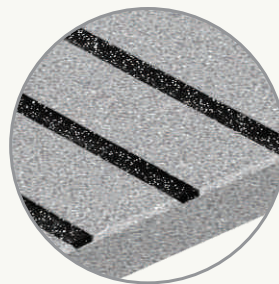
DOLPHIN ● MATT FINISH



BULL NOSE  
MOULDING



SANDWICH



GROOVE WITH  
EPOXY FILLING



DOLPHIN  
[MATT FINISH]



300x1200mm



BOURBON ● MATT FINISH



GRAPHITE ● MATT FINISH



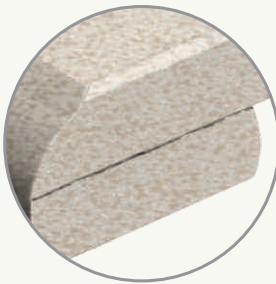
MUSHROOM ● MATT FINISH



BUTTER ● MATT FINISH



BULL NOSE  
MOULDING



SANDWICH



GROOVE WITH  
EPOXY FILLING

LARGEST PAVILION OF  
FULLBODY TILES



GRAPHITE  
[MATT FINISH]



600x1200mm

Chromatic  
SERIES



COBALT BLUE ● RUSTIC FINISH



CYAN ● RUSTIC FINISH



HIGH  
STRENGTH



MAINTENANCE  
FREE



CHEMICAL  
RESISTANCE



CYAN  
[RUSTIC FINISH]

LARGEST PAVILION OF  
FULLBODY TILES



COBALT BLUE  
[RUSTIC FINISH]



600x1200mm

Chromatic  
SERIES



DUSK

● RUSTIC FINISH



EMERALD

● RUSTIC FINISH



HIGH  
STRENGTH



MAINTENANCE  
FREE



CHEMICAL  
RESISTANCE



EMERALD - TENDER  
[RUSTIC FINISH]

LARGEST PAVILION OF  
FULLBODY TILES



DUSK - TENDER  
[RUSTIC FINISH]



600x1200mm

Chromatic  
SERIES



MAIZE

● RUSTIC FINISH



FLARE

● RUSTIC FINISH



HIGH  
STRENGTH



MAINTENANCE  
FREE



CHEMICAL  
RESISTANCE



FLARE  
[RUSTIC FINISH]

LARGEST PAVILION OF  
FULLBODY TILES



MAIZE  
[RUSTIC FINISH]



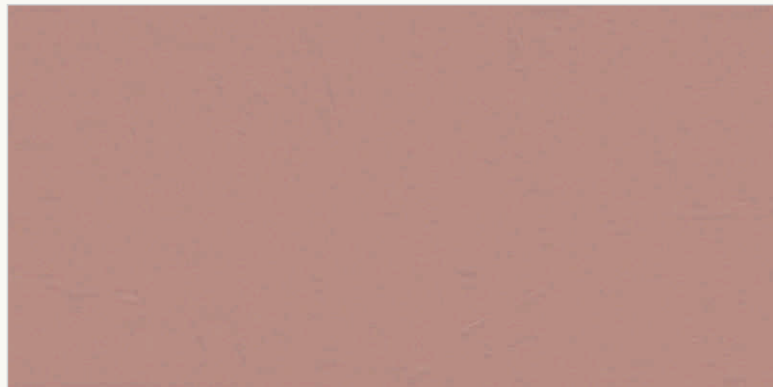
600x1200mm

Chromatic  
SERIES



TENDER

● RUSTIC FINISH



SALMON

● RUSTIC FINISH



HIGH  
STRENGTH



MAINTENANCE  
FREE



CHEMICAL  
RESISTANCE



SALMON - TENDER  
[RUSTIC FINISH]

LARGEST PAVILION OF  
FULLBODY TILES



TENDER  
[RUSTIC FINISH]



## Technical Specification

TECHNICAL DETAILS	STANDARD AS PER ISO-13006/EN176 GROUP BIa	MEAN VALUE OF FULL BODY VITRIFIED TILES	METHOD OF TEST
Deviation In Length & Width	± 0.60%	± 0.10%	ISO-10545-2
Deviation In Thickness	+ 5.00%	+2.00%	ISO-10545-2
Straightness Of Sides	± 0.50%	± 0.10%	ISO-10545-2
Rectangularity	+ 0.60%	± 0.10%	ISO-10545-2
Surface Flatness	± 0.50%	± 0.10%	ISO-10545-2
Glossiness	Gloss Meter	Min. 90%	Glossometer
Water Absorption	≤ 0.50%	E ≤ 0.03%	ISO-10545-3
Breaking Strength	1300 N	1800 N	ISO-10545-4
Abrasion Resistance	Max. 175mm	Max. 145mm³	ISO-10545-6
Moh's Hardness	Min. 6	≤ 6*	EN101
Frost Resistance	Frost Proof	Frost Proof	ISO-10545-12
Thermal Shock	No Damage	No Damage	ISO-10545-9
Moisture Expansion	Nil	Nil	ISO-10545-10
Thermal Expansion	<9 x 10~6	< 6 x 10~6	ISO-10545-8
Resistance of House Hold Chemical	No Damage	No Damage*	ISO-10545-13
Stain Resistance	Resistance	Resistance*	ISO-10545-14
Slip Resistance(friction Co Efficient)	> 0.40	> 0.40	ISO-10545-17

## Packing Details

SIZE	PCS./BOX	WEIGHT / BOX (Approx)		COVERAGE AREA / BOX
		POLISHED	MATT	
800x1600mm	2 Pcs.	51 Kg.	55 Kg.	2.56 mtr <sup>2</sup>
600x1200mm	2 Pcs.	27.5 Kg.	29.5 Kg.	1.44 mtr <sup>2</sup>
600x600mm (9mm)	4 Pcs.	26.5 Kg.	28.5 Kg.	1.44 mtr <sup>2</sup>
600x600mm (15mm)	2 Pcs.	N/A	23.5 Kg.	0.72 mtr <sup>2</sup>
300x1200mm (Full Body Stap)	2 Pcs.	16.5 Kg.	16.5 Kg.	0.72 mtr <sup>2</sup>





**Your Ceramica**

[contact@yourceramica.com](mailto:contact@yourceramica.com)

[www.yourceramica.com](http://www.yourceramica.com)

+919979604896